

Output Self-Controlling Heating Cable

TECHEATER®



Made by Sekisui Kasei Co., Ltd.

Output Self-Controlling Heating Cable

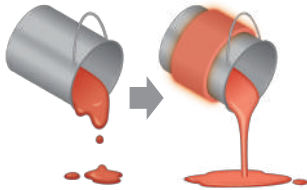
Waterproof type



- For 100V / 200V
- Up to 50m
- PSE Certification
(PSE:Electrical Appliances and Materials Safety Act)

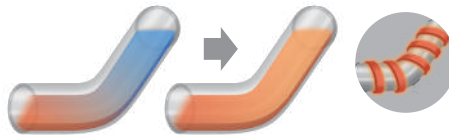
TECHEATER is active in various applications

Reduce viscosity



Pipes

- Anti-freezing
- Prevention of temperature drop



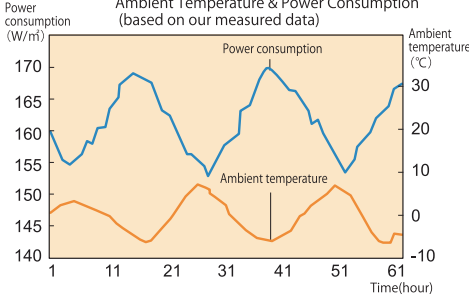
Prevention of condensation



Major features of TECHEATER

Feature1 Efficient Energy-Saving Capability

Ambient Temperature & Power Consumption (based on our measured data)



TECHEATER controls its temperature by itself to maintain a certain temperature in response to changes in the environmental temperature.

Feature2 Superior Safety



Since TECHEATER is self output control type, there will be no abnormal overheating or burning out even without using temperature-controlling thermostat.

Feature3 High Shape/Length Flexibility



It can be installed easily on bumpy and complicated shapes of piping. In addition, it can be used in a desired length by cutting freely.



株式会社スリーハイ
THREE HIGH CO.,LTD.

Web: www.threehigh.com
Mail: info_overseas@threehigh.co.jp



Headquarters/Factory 4-42-16 Higashiyamata, Tsuzuki Ward, Yokohama City, Kanagawa 224-0023 JAPAN
TEL: +81-45-590-5561 FAX: +81-45-590-5571



© Specifications (200V)

*Purpose: Prevention of freezing of pipes (heater temperature: 40°C)

	Product Number	Length (m)	Electric Power (W) (-20°C [-4°F] thermostatic chamber)	Electric Power (W) (0°C [32°F] thermostatic chamber)	Electric Power (W) (20°C [68°F] thermostatic chamber)	Standard Weight (g/m)*1	Width of Heating Area (mm)	Thickness of Heating Area (mm)	Voltage (VAC)	Temperature Range
T6	T6-30-01	1	35	29	23	191	18.5±1.5	7.5±1.0	200	-30°C~60°C
	T6-30-02	2	70	58	46					
	T6-30-03	3	105	87	69					
	T6-30-05	5	175	145	115					
	T6-30-10	10	350	290	230					
	T6-30-M50	50	1750	1450	1150					
T9	T9-30-01	1	46	38	32	183	18.5±1.5	7.5±1.0	200	-10°C~100°C
	T9-30-02	2	92	76	64					
	T9-30-03	3	138	114	96					
	T9-30-05	5	230	190	160					
	T9-30-10	10	460	380	320					
	T9-30-M50	50	2300	1900	1600					
T12	T12-30-01	1	54	49	43	240±10%	19.0±1.5	10.5±1.0	200	-20°C~120°C *2 *3
	T12-30-02	2	108	98	86					
	T12-30-03	3	162	147	129					
	T12-30-05	5	270	245	215					
	T12-30-10	10	540	490	430					
	T12-30-M50	50	2700	2450	2150					

*1 The standard weight is the weight of the heater part alone.

*2 The heat-resistant temperature of the power cable is 75°C.

*3 If cable connection and terminal sealing are performed on site, use under 100°C.

© T6 Series



with 1m [3.3ft] power cord without a plug



Long Type (heater part only)

© T9 Series

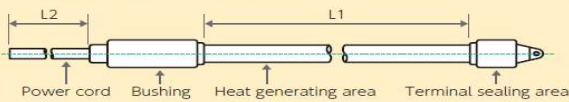


with 1m [3.3ft] power cord without a plug

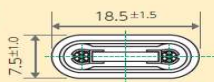


Long Type (heater part only)

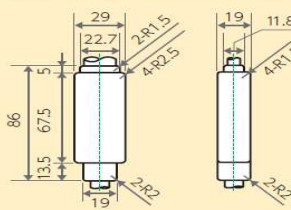
① Figure of TECHEATER



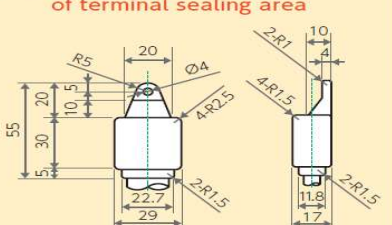
③ Cross section of heat generating area



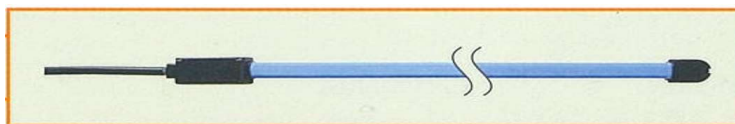
② External dimensions of bushing



④ External dimensions of terminal sealing area



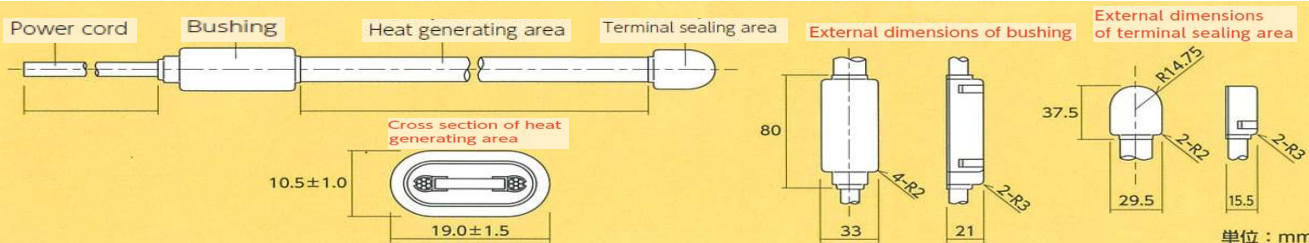
© T12 Series



with 1m [3.3ft] power cord without a plug



Long Type (heater part only)



単位：mm